



# THE TRIBUTARY

Fall 2025

NEWSLETTER FOR MITCHELL COUNTY CONSERVATION BOARD AND ENVIRONMENTAL EDUCATION FOUNDATION

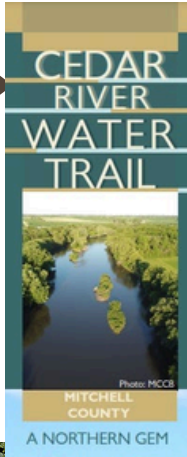
MITCHELL COUNTY



Fall fungi found in Mitchell County

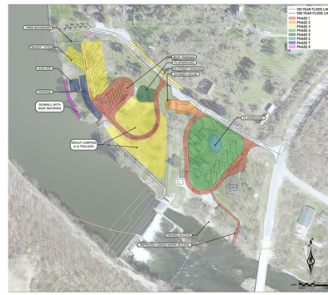
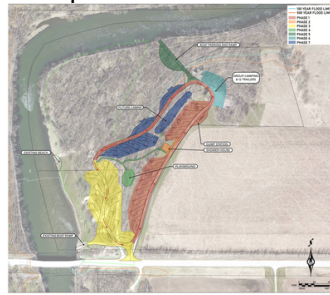
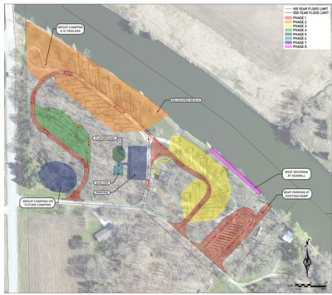
## MCCB Updates from the Director

Work is moving ahead on the Cedar River Access Improvement Project, and it will be exciting to see progress at Bennett Access, Spring Park, and the T38 Access. These improvements are designed to make the river more accessible, safer, and more enjoyable for all who visit. The project includes the installation of new boat ramps, designated kayak access, parking lot improvements, and streambank stabilization to protect the shoreline and improve safety. Crews are already hard at work, and the project will continue into the fall, with visible changes happening each week. Once completed, these upgrades will provide long-lasting benefits to our community and to visitors who enjoy the Cedar River.



MCCB Director Mike Miner

At the same time, we've begun developing master plans for Interstate Park, Halvorson Park, and Otranto Park. These master plans will serve as blueprints for the future, helping us prioritize projects, guide improvements, and ensure each park continues to meet the needs of the public while protecting the natural resources that make them unique.



### In this issue:

Monarchs!	pg. 2
Fall Foraging Class	pg. 3
Cemetery Walk	pg. 4
Hunting Season Safety	pg. 4
Events Calendar	pg. 5
MCEE Foundation	pg. 6
Hunter Education Class	pg. 7
Youth Pheasant Hunt	pg. 7
November Events	pg. 8
WGWL Trail Events	pg. 9
FMC Landfill News	pg. 9



As we move into the fall and winter seasons, we also want to highlight the many opportunities available on our public hunting areas. Staff have worked hard to manage habitat and provide quality spaces for hunters and outdoor enthusiasts alike. We encourage everyone to take advantage of these areas, whether it's for hunting or simply enjoying the outdoors, as they represent the results of ongoing stewardship and dedication to conservation.



THE TRIBUTARY  
WILD WEDNESDAY!

SEPT  
17TH

# MONARCH TAGGING!

5:30 PM

PITZEN CABIN @ RIVERSIDE PARK  
CAMPGROUND

23092 465<sup>th</sup> Street - Stacyville



With ever growing concern and interest in the decline of our pollinators, Mitchell County Conservation Board is offering a Monarch Tagging program on September 17th at the Pitzen Cabin, just north of Riverside Park Campground in Stacyville. Join Naturalist Chelsea at 5:30PM to learn all about Monarch Butterflies, the tagging program, and how YOU can help! Monarch Butterflies have an incredible story to tell—from their life cycle of caterpillar into butterfly, to their arduous migration to Mexico— these little beauties are a wonder to both the young and young at heart.

At this program, we will discuss the life cycle, the complicated migration, importance of native wildflowers, how to raise Monarchs, and the current population and conservation status of the Monarch Butterfly. Nets will be available to try and catch any wild-flying Monarchs, and participants will learn how to tag Monarchs and release them on their journey south.

Please bring any butterflies YOU have raised or captured to be tagged, too! This program is Free and does not require registration. We hope you can join us to learn more about the Mysteries and Magic of the Monarch!



## Be on the lookout for MONARCHS!

Mitchell County Conservation needs YOUR HELP to reach our 200 tagged Monarch goal! Please let us know if you have Monarch Butterflies to tag and Chelsea will do her best to get tags to you! If you see a roost or a large population on your property or in a public area, give Chelsea a call at (641) 330-0765 and she will try to meet you there! Chelsea will bring tags, a portable butterfly container, and nets to help capture the wild butterflies.

Any captured Monarchs will get their own coded tag to identify them on their journey to Mexico. These special stickers act like “license plates” to help track the Monarch’s migration patterns. If you capture or raise your own Monarchs, Chelsea has tags that you can use at home - just give her a call to arrange pick-up. Any captured or raised butterflies should be held in a large, well-ventilated container for less than 8 hours before tagging. Place a few branches in the container for the butterflies to rest on and put in a cool place until Chelsea can visit with tags.

*Help us send 200 Mitchell County Monarchs to Mexico!*



PINICON ALDERS CABIN  
3133 470TH STREET - MCINTIRE

# FALL FORAGING

September 28

1-4 PM  
CALL TO REGISTER



### Fall is for Fungi & Foraging!

Join Naturalist Chelsea Ewen Rowcliffe for a fun fall foraging foray!

We'll discuss common fall fungi and Wild Edible plants, develop identification skills, and go for a foraging walk. We'll return to the cabin area to prepare, and - best of all - sample some tasty wild treats!

This class is designed for beginners and is a family-friendly event. We will meet at the Pinicon Alders Wildlife Area Cabin just outside of McIntire. There is construction on the bridge IN McIntire, so make plans to go around on gravel, come in from the west, or around from the east onto 470th. Once you get to the entrance of Pinicon Alders Wildlife Area and Wapsi-Great Western Line Trail Parking area, follow the gravel driving path north from 470th Street, around the corner to the west (left), then continue straight and join the paved bike trail that leads north to the cabin area.

Please bring a water bottle and dress to be outside. All other materials will be provided. This class requires pre-registration. Registration is \$10/adult for members of the Environmental Education Foundation, or \$15/adult for non-members.

To sign up, contact Chelsea at (641) 732-5204 or (641) 330-0765 or email at [crowcliffe@mitchellcoia.us](mailto:crowcliffe@mitchellcoia.us)

If you enjoy participating in the programs Mitchell County Conservation/Environmental Education Foundation offers, appreciate the use of outdoor equipment and trails, or just want to ensure the youth, families, residents, and visitors to Mitchell County have the opportunity to spend time in nature and understand the importance of conserving our natural resources - **please consider joining the Mitchell County Environmental Education Foundation!** Your membership, donation of time & talents, and/or monetary support can make an even larger impact when used for grant matches and educational experiences like those listed in this newsletter.

See how to become a member on page 6.



**“The Mitchell County Environmental Education Foundation creates public awareness, promotes responsible stewardship, and expands support for the conservation of our natural resources and cultural heritage.”**

# FULL MOON CEMETERY WALK

October 6th

6:30 PM

**BROWNVILLE WILDLIFE AREA  
& BROWNVILLE CEMETERY**

**2859 400<sup>TH</sup> STREET  
RICEVILLE**

Enjoy a moonlit walk back through time at this NON-SCARY cemetery stroll. Pioneer Cemeteries, like the Brownville Cemetery, are not only the resting place for some of Mitchell County's early residents, but also a chance to explore the rich history of this area. The cemetery is home to a collection of grave stones that bear witness to pioneering days, and these weathered markers tell the stories of the early settlers, providing a glimpse into the past and honoring the memory of those who came before us.

At this walk, we will focus on the funerary art and symbolism of various grave stones while weaving in the history of Mitchell County's founding, providing insight into the challenges and triumphs of pioneer life. We will also discuss the connection pioneer cemeteries have to preserving and protecting native habitats and the unique plants and animals that call them home.

Whether you are a history enthusiast, a nature lover, or simply seeking a peaceful walk in the moonlight, join us for a unique evening at Brownville Cemetery.

**To get to the program:** Park at the western parking lot of Brownville Wildlife area. The Brownville Cemetery is located just to the south of this parking area. While the cemetery is flat and well maintained, walking over lawn and uneven surfaces will be required. There are also no restrooms available at the site, however there are facilities located just down the road at Pioneer Park. This is a family-friendly program and does not require registration. Please contact Naturalist Chelsea at (641) 330-0765 with any questions, help with directions, or weather related updates.

**Remember that this, and any burial or cemetery site, should be treated with the utmost respect. Please leave all plants and memorial items intact. Your assistance in maintaining the dignity of these places is appreciated.**

**Hunting Season has begun! If you are looking for a new area to explore, Mitchell County Conservation manages over 25 areas that are open to public hunting!**

For a complete list and/or maps of these areas, please contact us at (641) 732-5204 or visit our website. Be sure to stop by the Mitchell County Courthouse or local businesses like Hardware Hank, DeMaris Hardware, and True Value in Riceville to get your Fall Hunting licenses, tags, and Duck Stamps. You can also purchase license through the Iowa DNR "Go Outdoors Iowa" App!

Before you head out, be sure to brush up on the new Hunting & Trapping Regulations, copies of which are available anywhere licenses are sold, at the Milton. R. Owen Nature Center, and on the Iowa DNR Website at <https://www.iowadnr.gov/hunting/hunting-season-dates>

MCCB Wildlife Areas are designed for multi-use enjoyment, which includes hunting, but also canoeing, kayaking, fishing, foraging for wild edibles, photography, biking, hiking, horseback riding, wildlife & leaf watching, among many others. To keep everyone safe and provide positive experiences, please keep in mind the following tips:

#### For Hunters:

- Practice safe firearm handling & hunting strategies and be observant of your hunting area.
- Be courteous. Promote hunting and hunters in a positive light by following good outdoor ethics and keep our natural areas clean and a space for ALL to enjoy!
- Always wear your blaze orange! If accompanied by a dog, make sure they have their safety gear & blaze orange also.

#### For Everyone:

- Wear bright colored clothing & accessories for yourself and any leashed pets that may accompany you when out recreating.
- Be courteous. If a hunter is encountered, don't make unnecessary noise to disturb wildlife.
- Continue to enjoy our area parks during all seasons, but be aware of the many uses of our public areas.



# Fall 2025 Calendar of Events

## SEPTEMBER

S	M	T	W	T	F	S
30	1	2	3	4	5	6
7	8	9	10	11	12	13
14	15	16	17	18	19	20
21	22	23	24	25	26	27
28	29	30				



## OCTOBER

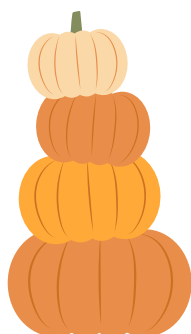
S	M	T	W	T	F	S
			1	2	3	4
5	6	7	8	9	10	11
12	13	14	15	16	17	18
19	20	21	22	23	24	25
26	27	28	29	30	31	

- Please check IA DNR Hunting Regulations for specific Hunting/Trapping dates, hours, limits, quotas, seasons, and laws <https://www.iowadnr.gov/hunting/hunting-season-dates>
- Coyote, Groundhog, & Pigeon continuous open HUNTING season

- Aug 30th - Cottontail Rabbit Hunting Season through Feb. 28
- Aug 30th - Fox & Gray Squirrel Hunting Season through Jan. 31
- 1st - Dove Hunting Season through Nov. 29
- 1st - Happy Labor Day!
- 4th - Fat Tire Bike Ride Meetup @ Limestone Brewers, 6PM
- 6th - Snipe Hunting Season through Nov. 30
- 6th - Rail Hunting Season through Nov. 14
- 6th - Special September Teal Hunting Season through Sept. 14
- 7th - Full Corn Moon
- 17th - Wild Wednesday! Monarch Tagging @ Pitzen Cabin @ Riverside Park, 5:30-7PM
- 18th - Fat Tire Bike Ride Meetup @ Limestone Brewers, 6PM
- 20th - Youth Deer Hunting Season through Oct. 5
- 20th - Disabled Deer Hunter (Permit Required) Season through Oct. 5
- 20th - North Zone Dark & Light Goose Hunting Season through Oct. 5
- 20th-21st - Youth North Zone Waterfowl Hunting Season
- 20th - WGWL Border Bike (IA/MN) – Official Bike Ride to the MN Border and Beyond
- 21st - Wapsi-Great Western Line Trail Pie Sunday & Golf Cart Day @ Trailhead, 1-5PM
- 22nd - Happy 1st Day of Fall!
- 27th - North Zone Duck, Merganser & Coot Hunting Season (Early Split) through Oct. 3
- 28th - Fall Foraging @ Pinicon Cabin, McIntire, 1-4 PM \*Pre-Registration Required

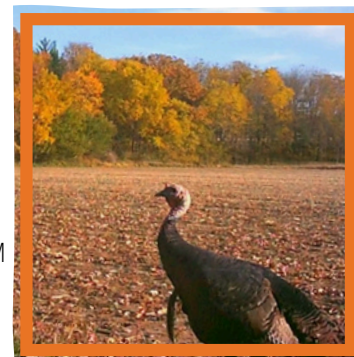
- Please check IA DNR Hunting Regulations for specific Hunting/Trapping dates, hours, limits, quotas, seasons, and laws. <https://www.iowadnr.gov/hunting/hunting-season-dates>
- Coyote, Groundhog, & Pigeon Continuous Open HUNTING season

- 1st - Archery Deer (Early Split season) Hunting Season through Dec. 5
- 1st - Fall Turkey Archery Only Hunting Season through Dec. 5
- 4th - Woodcock Hunting Season through Nov. 17
- 4th - Ruffed Grouse Hunting Season through Jan. 31
- 4th - Fat Tire Bike Ride Meetup @ Limestone Brewers, 2PM
- 6th - Full Hunter's Moon
- 6th - Full Moon Cemetery Walk @ Brownville W.A./Cemetery, 6:30PM
- 11th - Resident Only Early Muzzleloader Deer Hunting Season through Oct. 19
- 11th - Gray Partridge Hunting Season through Jan. 31st
- 11th - North Zone Duck, Merganser, & Coot Hunting Season (Late Split) through Dec. 2
- 11th - North Zone Dark & Light Goose Hunting Season (Bag limit 3) through Dec. 2
- 13th - Fall Turkey Gun/Bow Hunting Season through Dec. 5
- 15th - Crow Hunting Season through Nov. 30
- 17th & 18th - Hunter Education Class (requires pre-registration) @ MRO Nature Center
- 18th - "Fatober-Fest" Fat Tire Bike Event w/Limestone Brewers/Mitchell County Mountain Goats
- 18th-19th - Youth Rooster Pheasant Hunting Season
- 19th - Guided Youth Pheasant Hunt @ Milton R. Owen Nature Center
- 25th - Rooster Pheasant Hunting Season through Jan. 10
- 25th - Bobwhite Quail Hunting Season through Jan. 31
- 31st - Happy Halloween!



S	M	T	W	T	F	S
						1
2	3	4	5	6	7	8
9	10	11	12	13	14	15
16	17	18	19	20	21	22
23	24	25	26	27	28	29
30						

- 1st - General Trapping Season through Feb. 28
- 1st - General Furbearer Hunting Season through Feb. 28
- 1st - Beaver Trapping & Hunting season through April 15
- 1st - Mitchell County Pheasants Forever Banquet
- 1st - Fat Tire Bike Ride Meetup @ Limestone Brewers, 2PM
- 5th - Full Beaver Trapping Moon
- 9th - Annual WGWL Trail Association Meeting
- 11th - Veterans Day!
- 15th - Fat Tire Bike Ride Meetup @ Limestone Brewers, 2PM
- 19th - Wild Wednesday! DIY Charcu-"Tree" Boards, @ MRO Nature Center, 6:30-8:30PM
- 27th - Happy Thanksgiving!
- 30th - Wreath Making @ MRO Nature Center, 1-3 PM



- Please check IA DNR Hunting Regulations for specific Hunting/Trapping dates, hours, limits, quotas, seasons, and laws. <https://www.iowadnr.gov/hunting/hunting-season-dates>
- Coyote, Groundhog, & Pigeon Continuous Open HUNTING season

MITCHELL COUNTY



With our ever increasing “plugged-in” world, exposure to and understanding of our natural world is more important than ever. The Mitchell County Environmental Education Foundation strives to support quality environmental education programs for ALL residents and visitors of Mitchell County. Our goals include providing financial support through memberships for programs that educate and train the public, as well as increase access to such programs through interactive displays, events, and volunteers. Program topics include ecology, local plants and animals, geology, outdoor recreation skills, recycling, human & land relationships, and many more. Consider supporting environmental education by becoming a member today!

*“The Mitchell County Environmental Education Foundation creates public awareness, promotes responsible stewardship, and expands support for the conservation of our natural resources and cultural heritage.”*



**Recent projects funded through the MCEEF:**

- Environmental Education supplies for schools and public programming
- Native Plant Sale!

**INTERPRETIVE PLAN FOR THE NATURE CENTER!**  
**YOUR DONATION can make it a reality!!!**

Benefits of being a member...

- Early signup for camps, trips, and limited classes
- Recognition on our donor wall for \$50+ donation
- Tax-deductible donation
- Input on Projects, Events, & Programs
- Volunteer opportunities
- Reduced registration prices for classes, or “members only” programs



**BECOME A MEMBER**

**Yes! I want to join MCEEF!**

Additional Family Names/Memorial Inquiries:

Name/Organization

Address

City

State

Zip Code

Phone

Email

**Membership Levels**

- Student \$10
- Individual \$25
- Family (2+ people) \$40
- Senior (60+) \$20
- Memorial **Ask about options**
- VOLUNTEER!**
  - Fundraising
  - Nature Center Host
  - Event/Program Volunteer
  - Other Talent?

**Donor Levels**

- Sugar Creek \$50
- Spring Creek \$51 - \$100
- Turtle Creek \$101-\$250
- Little Wapsi \$251-\$500
- Burr Oak \$501-\$1000
- Little Cedar \$1000 +
- Red Cedar \$5000+

Make checks payable to:  
 MCEEF  
 1879-3 Highway 9  
 Osage, IA 50461

**This is a TAX EXEMPT Donation!**

# HUNTER EDUCATION COURSE

## OCTOBER 17 & 18

5-8 FRIDAY  
9-4 SATURDAY



MILTON R. OWEN  
NATURE CENTER  
OSAGE, IA

Hunter education is a mandatory program that is designed to introduce students to several lifelong skills that are important to many different types of outdoor recreational opportunities. The course teaches students basic survival and first aid skills, outdoor safety, wildlife identification, the basics of wildlife management, hunting laws, and firearm/archery safety. Hunter education also stresses the importance of individual responsibility and outdoor ethics. The safety, recruitment, and retention of hunters are important in continuing the tradition of hunting in Iowa's GREAT Outdoors! Iowa Law requires that anyone born after January 1, 1972, must be certified in Hunter Education before they are eligible to purchase an Iowa hunting license.

This class is prioritized for students 12 years old and older. Adults are welcome to stay with their youth student through the class, but it is not required. Students are asked to bring a sack lunch and something to drink on Friday and Saturday, as the course will continue through meal hours. PLEASE WEAR/BRING OUTDOOR GEAR as we will go outside during different portions of instruction. All other teaching materials, firearms, & safety equipment will be provided.

This is a CLASSROOM COURSE and does not count as a field day. Students must successfully complete BOTH days to earn their certificate.

This class is FREE, but is limited to 20. **Students NEED to pre-register** by registering online with the Go Outdoors Iowa Event Registration System. Please visit: [www.gooutdoorsiowa.com](http://www.gooutdoorsiowa.com) to log in or create a new account. Once logged in, you can find and register for the class under "Events/Classes—Search Events" in the upper left area of the page. You can also sign up here: <https://license.gooutdoorsiowa.com/Event/EventsHome.aspx>

You can also call Chelsea at (641) 330-0765 for assistance with registration.

Please Note: When you are registering a child for this course, please be sure to log in as the child you are wishing to register or create an account for that child, and do not log in or register yourself unless you are wanting to take the course yourself for certification. Students who have previously purchased Iowa DNR licenses, such as youth deer tags, will already have an Iowa DNR account and should register for this course using their personal information.

**OCTOBER 19**  
**GUIDED YOUTH PHEASANT HUNT**

MITCHELL COUNTY PIONEER CHAPTER



Milton R. Owen Nature Center - Osage

Youth Ages 12-15

Pre-Registration Required  
Register by October 9th

Time - TBD

Local Mitchell County Pioneer Pheasants Forever chapter and Mitchell County Conservation are teaming up to offer a guided Youth Pheasant Hunt this fall!

Whether your youth is a seasoned hunter, or they are just starting their hunting journey, all youth hunters are invited to join this fun event!

How it works: Local pheasant hunters are paired with several youth to experience pheasant hunting. After pairing up, hunters & mentor crews travel out to MCCB wildlife areas for the hunt!

This event is offered for FREE through the Mitchell County Pioneer Chapter of Pheasants Forever, however we do ask that interested participants call ahead to register. This ensures we have enough mentors for interested youth. Please register by October 9th!

Registered youth should bring a refillable water bottle, their own gun & ammunition, and wear weather-appropriate clothing and safety gear.

Good outdoor boots and dressing in layers helps ensure hunters will have an enjoyable time outdoors, regardless of the weather.

Some guns, ammunition, and safety gear are available to borrow if needed.

Please call (641) 732-5204 - MCCB Office or  
(641) 426-6212 - Brad Olson MCCB Trails Tech/PF Member to register.

WILD WEDNESDAY!

DIY

# CHARCUTERIE - "TREE" BOARDS!

MILTON R. OWEN NATURE CENTER - OSAGE

NOV 19TH | 6:30-8:30PM



**LIMIT 15 - PRE-REGISTRATION REQUIRED**

Take a tasty trip from tree-to-table in this hands-on class! Participants will learn about tree identification, properties of different species of wood, and then take that knowledge to the table by making their own charcuterie board! In this class, you'll get step-by-step instructions on creating a stencil, using a heat gun, and the chemical reaction needed to create a unique charcuterie board to take home. This board makes a great gift, or the perfect sharing plate for upcoming holiday gatherings. Different designs will be available to choose from to customize your board, and you will also get ideas on filling your board with tasty, local treats.

Once registered, participants will be contacted to choose the stencil/design they would like for their board.

**Sign up today - You definitely won't be 'board'!**

**Please call Chelsea at (641) 732-5204 or (641) 330-0765 or email [crowcliffe@mitchellcoia.us](mailto:crowcliffe@mitchellcoia.us) to register. \$30/registration for materials - \$25 for members of the Environmental Education Foundation**



WILD FORAGED

## WREATH/SWAG MAKING WORKSHOP

NOVEMBER 30TH

1 PM

MILTON R. OWEN NATURE CENTER - OSAGE

**PREREGISTRATION REQUIRED**

FALL 2025

### GET A HEAD START ON THE HOLIDAY SEASON!

During this workshop, you will be provided with everything you need to make a unique foraged greens wreath or "teardrop" door swag! You don't need to be crafty or have any experience to make your own holiday décor - just come and have fun!

Class begins at 1 PM at the Milton R. Owen Nature Center with a short discussion on winter tree identification and sustainable foraging for wild décor. Next, we'll provide instructions and materials needed to create your one-of-a-kind natural wreath/swag.

You will be supplied with a 14 inch wire wreath form or grapevine swag base, an abundance of different sustainably foraged evergreens and other natural materials, florists wire, pruning shears, and ribbon.

Hot cocoa and warm apple cider will also be provided.

All essential supplies are included with your registration, but feel free to bring any special items (bells, ornaments, antlers, ribbon, etc.) to add a personal touch to your wreath/swag and make it uniquely yours. We are using natural/raw materials and therefore some of them may be quite prickly or have sap on them. Some individuals may find it helpful to bring their own gardening gloves to protect their hands as these are not provided for the class. You may also want to bring your own pruning shears and/or wire cutters if you have them.

Preregistration is required due to limited space in the workshop. There are only 20 spots available so get registered right away! Registration is \$25 and includes instructions, a 14" wreath/swag base, evergreens and other natural materials, ribbon, and floral wire.

**Contact Naturalist Chelsea at (641) 732-5204 (MCCB Office) or (641) 330-0765 (cell) or email her at [crowcliffe@mitchellcoia.us](mailto:crowcliffe@mitchellcoia.us) to sign up.**

RECENT RECYCLING NEWS & THE LANDFILL LATEST

FMC Landfill - 3354 330th Street Elma, IA 50628  
www.fmclandfill.org



**FMC Landfill Hours:**

- Monday: 7am-3pm
  - Tuesday: 7am-3pm
  - Wednesday: 7am-3pm
  - Thursday: 7am-3pm
  - Friday: 7am-3pm
  - Saturday: Closed
  - Sunday: Closed
- \*Large loads must be unloaded by 2:30pm.

Extremely windy days may shut us down early (give us a call to check!), but otherwise we are open year-round. We look forward to assisting with your Recycling and Waste Disposal needs.

**Saturdays at the Landfill:**

There is only one more Saturday left for weekend openings at the Floyd Mitchell Chickasaw Landfill! The FMC Landfill will be open **Saturday September 20th - 8AM-NOON.** All large loads need to be on the scale by 11:15 and all small loads by 11:45. All loads must be tarped and secured down or there will be a \$20.00 fine added to your bill. We accept cash, credit, and debit cards. NO checks.

**DON'T MISS OUT!**



**Mobile HHM Collection**

This service is offered free once a month Spring-Fall for household hazardous materials, **BY APPOINTMENT ONLY,** at the recycling center in Osage. Make your appointment or get more information now by calling (641) 982-4288.

**Recycling Days you can Celebrate at Home!**

While we ALL should be doing our part to Reduce, Reuse, Recycle, and "Rethink" our choices EVERYDAY, it's always fun to have something to celebrate!

**October - National Fire Prevention Month**

Check the batteries in your smoke detectors and then recycle them at the Mitchell County Recycling center!

**November 15th - America Recycles Day**

The day's goals include encouraging people to recycle more and to recycle properly, and to be mindful of their consumption. Learn more at [www.kab.org/our-signature-programs/america-recycles-day/](http://www.kab.org/our-signature-programs/america-recycles-day/)

**You MUST call to set up an appointment!**

If you do not, your items will not be accepted. The Landfill has a HHW collection center on the property that is open by appointment for those who can't make this local collection date. Examples of items that can be brought include: lightbulbs, used oil, filters, antifreeze, oil-based paints, aerosols, household cleaners, and more! Check our website for more information or to make an appointment to bring items to the landfill. The online appointment system is NOT for the MOBILE collection times.

WAPSI-GREAT WESTERN LINE



Trail Events

TRAILHEAD

Wapsi-Great Western Line

110 EAST MAIN STREET (U.S. HWY #9)

RICEVILLE IA 50466

WWW.WGWLTRAIL.COM



- **Saturday, September 20th – Border Bike (IA/MN)** – Official Bike Ride to the MN Border and Beyond  
**Family Route** - 22 miles round trip from WGWL Trailhead to Bailey Station or 28 miles round trip to the IA/MN Border  
**Skilled Route** - 56 mile Iowa/Minnesota from WGWL Trailhead to MN Shooting Star Trail and back.

**\$12 pre-register \$15 same-day registration FREE - Children 12 and under (with accompanying adult)**

When you register on-line or at the Trailhead, you'll receive a wristband that can be punched at various designated stops with refreshment specials will be available at restaurants located along the routes, and Free "Heavenly Apples" to registered bikers at Bailey Station from 12-3PM. "Heavenly Apples" are fresh cut apples drizzled with caramel and peanuts – just show them your wristband! If you are not a registered biker, but would still like this sweet treat, "Heavenly Apples" will be available at Bailey Station for non-riders for a free-will donation. Proceeds support the Wapsi-Great Western Line Trail. For more information, or to register, visit <http://wgwltrail.com/borderbike/>.

- **Sunday, September 21st – Golf Cart Day & Pie Sunday** at Trailhead 1-5PM.

Passes available for \$15 at Welcome Center. Registration fee supports Trailhead maintenance. Valid driver's license required for cart driver. Bring your own cart or rent one from Riceville Golf Course (641-985-2447). Begin and end your golf cart adventure at the Trailhead. No golf carts allowed in Lake Hendricks Park.



- **Sunday, November 9th – Annual Trail Committee Meeting**



# Mitchell County

Conservation Board

1879-3 Highway 9

Osage, IA 50461

Office: (641) 732-5204



Help us keep costs down and save resources by going paperless. If you would like to receive our newsletter electronically, please send an email to [crowcliffe@mitchellcoia.us](mailto:crowcliffe@mitchellcoia.us)



<https://www.mitchellcountyconservation.com> or

<https://www.mitchellcountyconservation.com/County/Mitchell.aspx>

Keep up to date with our events and nature happenings by liking and following us on: Facebook, Instagram, Twitter, YouTube and at



## Mitchell County Conservation Board:

Bridget Chatfield  
Lori King  
Mike Palsic  
Pat Wagner  
Mark Ross

### Staff:

Mike Miner - Director  
Daniele Dorsey - Office Manager  
Brian Huffman - Parks Supervisor  
Christine Huffman - Recycling Center Attendant  
Matt Nicholson - Maintenance  
Brad Olson - Trail Tech  
Chelsea Rowcliffe - Naturalist  
Connor Siffka - Conservation Tech  
Andy Taets - Recreation & Outreach Specialist  
Austin Walk - Nat. Resources Tech/Roadside Manager

### Mitchell County Environmental Education Foundation:

Bridget Chatfield - President  
Eric Follmuth—Vice Pres.  
Jessica Bohannon—Secretary  
Daniele Dorsey—Treasurer  
Steve Strashelm  
Dave Goodale  
Jonathon Cramer  
Gary Huffman  
Ed & Joanne Kleinwort  
Milt & Linda Owen  
Chelsea Rowcliffe (ex-officio)  
Andy Taets (ex-officio)  
Diane Wright