



THE TRIBUTARY

MITCHELL COUNTY



Summer 2025

NEWSLETTER FOR MITCHELL COUNTY CONSERVATION BOARD AND ENVIRONMENTAL EDUCATION FOUNDATION



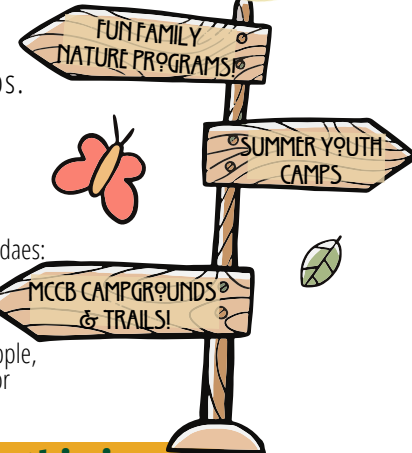
Blooming banks at Rock Creek Wildlife Area

A SUMMER OF FUN WITH MCCB!

Mitchell County Conservation and the Mitchell County Environmental Education Foundation are excited to offer various nature camps and environmental education opportunities for area youth this summer! Help your child discover the wonders of nature through Picnics in the Park, Discovery Day Camps, Adventure Camp, or our other special programs! Camps are separated into age groups to help you and your child have the best experiences enjoying the outdoors. Most require pre-registration, so sign your kiddos up early!

Details for all of our youth programming, as well as all public programming, can be found on the following pages.

- Age/Grade ranges are based on the upcoming 2025-2026 school year.
- All camps are lead by Mitchell County Naturalist Chelsea Ewen Rowcliffe and Natural Resource & Outreach Specialist Andy Taets, and will feature nature-based subjects and outdoor activities.
- Registration fees cover educational supplies and equipment maintenance.
- Camp scholarships are available for those wanting assistance with registration fees - please contact Chelsea for more info.
- Please call, email, visit our Facebook Page, www.mitchellcountyconservation.com, www.mycountyparks.com, or stop by our office for info on registering for our summer camps.



We hope to see you OUTSIDE this SUMMER!
**Need some more ideas for summer fun?
Try these tricks and snacks during your next
Campout or Bonfire!**

- **Gourmet S'mores** - Think all the same toppings for ice cream sundaes: use various cookies instead of just grahams, flavored chocolates or candybars instead of plain, fun add-ins like icing, jam, peanut butter, sliced fruit, nuts or even a salty hit like bacon or potato chips!
- **Roasting Alternatives** - Try roasting fruits like strawberry, pineapple, peach, banana, or pears. String cheese, un-wound cinnamon rolls or bread/pizza dough (from the tube), or even Starburst make fun fire-roasted snacks!
- **Campfire Tricks** - Check out our this cool chart!

BORAX

Toss in a bit of Borax (sodium tetraborate) for green flames



"Salt Alternative" WATER SOFTENER

Chuck in some water softener tablets (potassium chloride) for purple flames



TABLE SALT

A dash of table salt (sodium chloride) will give you deeper orange flames



EPSOM SALT

Not just for baths, Epsom salts (magnesium sulfate) makes nice white flames



FLOUR

A few flakes of flour will make your fire flare up.



SUGAR

Throw in some sugar for little sparks and explosions



In this issue:

Picnics in the Park.....	pg 2
Upcoming Youth Programs.....	pg 3
Guided Paddle Floats.....	pg 4
Events Calendar.....	pg 5
MCEE Foundation.....	pg 6
Discovery Day Camps.....	pg 7
Adventure Camps.....	pg 7
Stargazing & other programs...	pg 8
WGWL Trail Events.....	pg 9
Recycling & Landfill News.....	pg 9

June Public Programs



Families with children going into Kindergarten and younger are invited to enjoy nature through weekly "Picnics in the Park" in June!

Picnickers are asked to bring a picnic lunch, blanket or tablecloth, and have an adult present throughout the program. Please meet us at the specified park where we will eat lunch first, then have a short program and activities based on a nature-themed book. Older children are welcome to attend, but the content and activities is geared for younger learners.

This program is FREE and there is no registration required. Just show up with your picnic lunch & your littles, and be ready to have fun learning about nature! This program will be postponed or rescheduled if there is severe weather. Please call Chelsea's cell at (641) 330-0765, or visit our Facebook page or Website for any event or weather related questions or updates.

- JUNE 4th - "Terrific Trees" @ Halvorson Park - St. Ansgar
- JUNE 11th - "Shell Secrets" @ Cedar Bridge Park - Osage
- JUNE 18th - "Ant's Picnic" @ Francis Park - New Haven
- JUNE 25th - "Marvelous Mud" @ Otranto Park - Otranto/North of St. Ansgar



If you enjoy participating in the programs Mitchell County Conservation/Environmental Education Foundation offers, appreciate the use of outdoor equipment and trails, or just want to ensure the youth, families, residents, and visitors to Mitchell County get to spend time in and understand the importance of conserving our natural resources - **please consider joining the Mitchell County Environmental Education Foundation!**

Your membership, donation of time & talents, and/or monetary support can make an even larger impact when used for grant matches and opportunities like those listed here.

See how to become a member on page 6.



"The Mitchell County Environmental Education Foundation creates public awareness, promotes responsible stewardship, and expands support for the conservation of our natural resources and cultural heritage."

FIRESIDE CHATS

with MCCB Naturalist

Chelsea

6:30 PM

*Milton R. Owen Nature Center
1879-3 Highway 9 - Osage*



JUNE 20

Let's discover the many ways to Celebrate the Summer Solstice! Chelsea will have some fun, sunshiny crafts, snacks, and activities for all ages. We'll finish out the longest day of the year by watching the sun set.



JULY 25

Did you know that Iowa is home to around 2,000 different species of Moths? Compare that to only around 110 species of Butterflies! To celebrate National Moth Week, we will explore the fascinating nighttime world of moths. You'll learn about the various types of moths in our area, their behaviors to avoid predators, and their importance as pollinators. As it gets dark (around 8:30) we will also set up a "lightsheeting trap" to attract and observe live moths!



AUG 15

Mitchell County Conservation is fortunate to have some extra special animal education ambassadors. Learn about what makes them unique, the habitats they depend on, and even get a chance for a "meet and greet"!

These "Fireside Chats with Chelsea" are designed to be fun and educational for all ages! Join us for an evening filled with hands-on learning, activities, and camaraderie around a crackling fire. Perfect for both the young and young at heart looking to make new friends and enjoy our beautiful Mitchell County outdoors. Some seating is available in the outdoor classroom, but you may want to bring a camp chair and waterbottle for extra comfort. These events are free and open to the public. In case of rain or storms, the event will be moved into the nature center. Contact Chelsea for more information.

Office:
(641) 732-5204

Cell:
(641) 330-0765

crocliffe@mitchellcoia.us



Summer Public Programs

FREE GUIDED KAYAK & PADDLEBOARD FLOATS!



Guided Float Dates:

June 11th - Full Moon Float!

June 25th

July 9th

July 23rd

August 6th

August 13th

Enjoy a relaxing evening exploring Mitchell County's beautiful waters with our guided paddles! This is a FREE program led by MCCB Natural Resource & Outdoor Recreation Specialist, Andy Taets. Be sure to check out the special "Full Moon Float" on June 11th! More information on this float below.

These floats are open to all ages, but children must have the ability to control their own boat or plan to paddle with an adult. All equipment and basic paddling instructions are provided and all floats will take place in Mitchell County. If you have your own equipment and would like to join the float, please contact Andy with your information to be added to the attendee list. Floats will typically take place around 6:00 in the evening, and once you have signed up, you will be contacted with the specific meeting time & location. Times and locations change based on current river conditions.

CONTACT: ANDY TAETS:(641) 420-5517

ATAETS@MITCHELLCOIA.US

OFFICE: (641) 732-5204

Full Moon Float

June 11th

9:00 PM

(approximately)

Many people have gone kayaking, but have you ever gone at night? This unique float is will witness a gorgeous sunset and welcome a Full Strawberry Moon. Paddlers will enjoy a leisurely float down river and experience night unfold on the water. During this one-of-a-kind, guided float, boats will be festooned with glow sticks so you and your friends can see the river in a new light, while enjoying all the sounds and sensations of the river at night. We will provide all instruction and gear necessary for a fun and safe trip, but there are a few things you may want to bring that make it go even smoother:

- water bottle
- snacks
- water shoes
- long-sleeved shirt (dress in layers)
- bug spray
- towel
- headlamp
- dry bag for phone, extra clothes, etc.

Because of the unique conditions of a night float, this event is geared towards adults and older/more experienced paddlers.

Spots are limited to 10, so please call/text or email Andy to reserve your place. If you have your own boat and would like to join the float, please contact Andy with your information to be added to the attendee list. Once you have signed up, you will be contacted with the specific float location based on current river conditions.

Enjoy a beautiful evening, relax in nature, and let your worries drift into the night. PAGE 14

Summer 2025 Calendar of Events



S	M	T	W	T	F	S
JUNE						
1	2	3	4	5	6	7
8	9	10	11	12	13	14
15	16	17	18	19	20	21
22	23	24	25	26	27	28
29	30					

Eat LOCAL this summer from our Farmer's Markets!

Stacyville: Tuesdays, 4:30-6 PM @ City Park

Osage: Thursdays, 3:30-5:30 PM @ City Park along Chestnut Street

St. Ansgar: Thursdays, 4-5:30 PM @ Clausen City Park along Washington Street

Riceville: Saturdays, 9-11:30AM @ 203 Main Street



- Saturdays & Sundays** - Wapsi-Great Western Line Trailhead Welcome Center Open, 2-4PM, **pg. 9**
- 31st** - Youth Hunter Education Challenge, Rock Creek Marina and Campground, Camanche, IA, **pg. 8**
- 1st** - Golf Cart Day & Pie Sunday at the Wapsi-Great Western Line Trail, 2-6PM
- 2nd** - Stacyville "Tuesdays on Broad" Family Fun Night @ Stacyville City Park, 4:30-7PM
- 4th** - Picnics in the Park "Terrific Trees" @ Halvorson Park, St. Ansgar, 11:30AM, **pg. 2**
- 5th** - Fat Tire Bike Ride, @ Limestone Brewers, 6:15PM
- 6th** - Friday Night Out @ Mitchell County Fairgrounds "Midway" off Chestnut Street, 5PM
- 6th-8th** - Iowa DNR Free Fishing Weekend (no license needed)
- 11th** - Picnics in the Park "Shell Secrets" @ Cedar Bridge Park, Osage - 11:30AM
- 11th** - Full Moon Float! **pg. 4**
- 11th** - Full "Strawberry" Moon
- 13th-14th** - St. Ansgar Town & Country Days Celebrations
- 15th** - Happy Father's Day!
- 15th** - McIntire Tractor Pull
- 16th-22nd** - National Pollinator Week!
- 18th** - Picnics in the Park "Ant's Picnic" @ Francis Park, New Haven, 11:30AM
- 19th** - Fat Tire Bike Ride, @ Limestone Brewers, 6:15PM
- 20th** - Happy Summer Solstice!
- 20th** - Fireside Chat w/Chelsea @ M.R.O. Nature Center, Osage, 6:30PM **pg. 3**
- 21st** - FMC Landfill Open 8AM-12
- 25th** - Picnics in the Park - "Marvelous Mud" @ Otranto Park, N of St. Ansgar, 11:30AM
- 25th** - Free Guided Paddle Program, **pg. 4**

S	M	T	W	T	F	S
JULY						
		1	2	3	4	5
6	7	8	9	10	11	12
13	14	15	16	17	18	19
20	21	22	23	24	25	26
27	28	29	30	31		

- Saturdays & Sundays** - WGWL Trailhead Welcome Center Open, 2-4PM, **pg. 9**
- 1st** - "Tuesdays on Broad" Family Fun Night @ Stacyville City Park, 4:30-7PM
- 2nd** - Discovery Day Camp! 1st & 2nd Grade, 9-11:30AM. **pg. 7**
- 3rd** - Discovery Day Camp! 3rd & 4th Grade, 9-11:30AM
- 3rd** - Fat Tire Bike Ride, @ Limestone Brewers, 6:15PM
- 4th** - Happy 4th of July!
- 4th** - Osage 4th of July Parade
- 6th** - Pie Sunday @ Wapsi-Great Western Line Trail, 2-5PM
- 7th** - Adventure Camp! 5th-8th Grade - "Fly Fishing Fun!", **pg. 7**
- 8th** - Discovery Day Camp! 1st & 2nd Grade, 9-11:30AM
- 9th** - Free Guided Paddle Program, **pg. 4**
- 10th** - Discovery Day Camp! 3rd & 4th Grade, 9-11:30AM
- 10th** - Full "Buck" Moon
- 11th** - Adventure Camp! 5th-8th Grade - "Survive the Wild", **pg. 7**
- 11th** - Friday Night Out - Osage (Mitchell County Fairgrounds, Chestnut St.)
- 15th** - Discovery Day Camp! 1st & 2nd Grade, 9-11:30AM
- 15th-17th** - Outdoor Journey For Girls @ Hickory Hills Park, LaPorte City, **pg. 8**
- 17th** - Discovery Day Camp! 3rd & 4th Grade, 9-11:30AM
- 17th** - Fat Tire Bike Ride, Limestone Brewers @ 6:15PM
- 18th** - Adventure Camp! 5th-8th Grade - "Fat Tire Trail Ride", **pg. 7**
- 22nd** - Adventure Camp! 5th-8th Grade - "Kayak the Cedar", **pg. 7**
- 23rd** - Discovery Day Camp! 1st & 2nd Grade, 9-11:30AM
- 23rd** - Free Guided Paddle Program, **pg. 4**
- 24th** - Discovery Day Camp! 3rd & 4th Grade, 9-11:30AM
- 25th** - Fireside Chat w/Chelsea @ M.R.O. Nature Center, Osage, 6:30PM **pg. 3**
- 25th-26th** - Stacyville's Brat Daze Celebrations
- 30th** - Aug. 3rd - Mitchell County Fair Week



S	M	T	W	T	F	S
AUGUST						
					1	2
3	4	5	6	7	8	9
10	11	12	13	14	15	16
17	18	19	20	21	22	23
24	25	26	27	28	29	30

- Saturdays & Sundays** - WGWL Trailhead Welcome Center Open, 2-4PM
- July 30th - Aug. 3rd** - Mitchell County Fair
- 2nd** - Riceville Wapsi Fest - WGWL Trail events all day
- 3rd** - Pie Sunday @ Wapsi-Great Western Line Trail, 2-5PM
- 4th-6th** - Outdoor Journey for Girls @ Wildwood Hills Ranch, St. Charles
- 5th** - "Tuesdays on Broad" Family Fun Night @ Stacyville City Park, 4:30-7PM
- 6th** - Adventure Camp! 5th-8th Grade - "Shooting Sports", **pg. 7**
- 6th** - Free Guided Paddle Program, **pg. 4**
- 7th** - Fat Tire Bike Ride, Limestone Brewers @ 6:15PM
- SUMMER 2025**

- 7th-17th** - Iowa State Fair
- 8th** - Adventure Camp! 5th-8th Grade - "Kayak the Cedar", **pg. 7**
- 8th** - Friday Night Out - Osage (Mitchell County Fairgrounds, Chestnut St.)
- 9th** - Full "Sturgeon" Moon
- 9th-10th** - Cedar Valley Memories Power Show
- 12th** - Stargazing @ Lund's Access/Cedar River Greenbelt Trail, 8:30PM, **pg. 8**
- 13th** - Free Guided Paddle Program, **pg. 4**
- 15th** - Fireside Chat w/Chelsea @ M.R.O. Nature Center, Osage, 6:30PM **pg. 3**
- 16th** - Carpenter Days
- 20th** - Senior Citizen Golf Cart Day @ Wapsi-Great Western Line Trail
- 21st** - Fat Tire Bike Ride, Limestone Brewers @ 6:15PM

THE TRIBUTARY

MITCHELL COUNTY



With our ever increasing “plugged-in” world, exposure to and understanding of our natural world is more important than ever. The Mitchell County Environmental Education Foundation strives to support quality environmental education programs for ALL residents and visitors of Mitchell County. Our goals include providing financial support through memberships for programs that educate and train the public, as well as increase access to such programs through interactive displays, events, and volunteers. Program topics include ecology, local plants and animals, geology, outdoor recreation skills, recycling, human & land relationships, and many more. Consider supporting environmental education by becoming a member today!

“The Mitchell County Environmental Education Foundation creates public awareness, promotes responsible stewardship, and expands support for the conservation of our natural resources and cultural heritage.”



Recent projects funded through the MCEEF:
 Summer camp supplies & scholarships
 Educational Materials for programs
 Grant-match funding for grants
 Native Plant Sale

INTERPRETIVE PLAN FOR THE NATURE CENTER!
YOUR DONATION can make it a reality!!!

Benefits of being a member...

- Early signup for camps, trips, and limited classes
- Recognition on our donor wall for \$50+ donation
- Tax-deductible donation
- Cool “members only” swag
- Volunteer opportunities
- Reduced registration prices for classes, or “members only” programs



BECOME A MEMBER

Yes! I want to join MCEEF!

Additional Family Names/Memorial Inquiries:

Name/Organization

Address

City State Zip Code

Phone

Email

Membership Levels

- Student \$10
- Individual \$25
- Family (2+ people) \$40
- Senior (60+) \$20
- Memorial **Ask about options**
- VOLUNTEER!**
 - Fundraising
 - Nature Center Host
 - Event/Program Volunteer
 - Other Talent?

Donor Levels

- Sugar Creek \$50
- Spring Creek \$51 - \$100
- Turtle Creek \$101-\$250
- Little Wapsi \$251-\$500
- Burr Oak \$501-\$1000
- Little Cedar \$1000 +
- Red Cedar \$5000+

Make checks payable to:
 MCEEF
 1879-3 Highway 9
 Osage, IA 50461

This is a TAX EXEMPT Donation!

Discovery Day Camps!



Camps for students entering:
1st & 2nd and 3rd & 4th.
Pre-registration required - Due June 27th!



Help your child discover the wonders of nature this summer through Discovery Day Camps!
Age/Grade ranges are based on the 2025-2026 school year.
Camps meet at the Milton R. Owen Nature Center and require pre-registration.

ENTERING 1ST & 2ND
JULY 2ND - SOIL SAFARI

***TUES, JULY 8TH - INSECT-IGATIONS**

***TUES, JULY 15TH - PLAYING ON THE PRAIRIE**

(FLOWERS & SEEDS)

JULY 23RD - RAD REPTILES!

\$20/camper

Registration covers supplies for ALL FOUR camps. Scholarships are available for anyone needing assistance with registrations costs. Please contact Chelsea for more information.

ENTERING 3RD & 4TH
JULY 3RD - MARVELOUS MONARCHS

JULY 10TH - GEOLOGY ROCKS!

JULY 17TH - WOODLAND WONDERS

(TREES & FUNGI)

JULY 24TH - WILDLY CREATIVE
(NATURE ART)

TO REGISTER, CONTACT US AT:

Office: (641) 732-5204 Chelsea's Cell: (641) 330-0765 crowcliffe@mitchellcoia.us

ATTEND ALL 6, OR PICK AND CHOOSE YOUR FAVORITES!

Adventure Camp!

YOUTH ENTERING 5TH-8TH GRADE

CONTACT US:
(641) 732-5204
(641) 330-0765

crowcliffe@mitchellcoia.us
\$20/camper per camp

JULY 7TH
FLY FISHING FUN!



JULY 22ND
KAYAK THE CEDAR!



Join Mitchell County Conservation staff Andy Taets and Chelsea Rowcliffe to explore nature this summer! During these camp days, we will be adventuring through many different outdoor skills.

You can join us for all six camps, or only sign up for your favorites. Camps will meet in a different Mitchell County Conservation location for each date. Campers are asked to wear outdoor clothing & close-toed shoes, and bring a refillable water bottle. All other equipment will be provided, unless otherwise specified. Space is limited, so **PRE-REGISTRATION IS REQUIRED.** Please call or email to register!

JULY 11TH
SURVIVE THE WILD!



AUGUST 6TH
SHOOTING SPORTS!



JULY 18TH
FAT TIRE TRAIL RIDE!



AUGUST 8TH
NATURE ART!



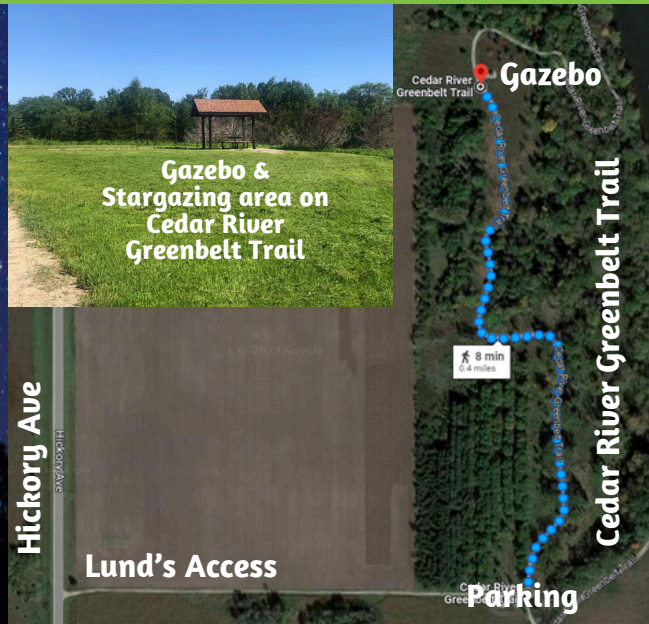
AUGUST 12TH

Star Gazing

8:30PM

LUND'S ACCESS/CEDAR RIVER GREENBELT TRAIL GAZEBO

3700 HICKORY AVENUE - OSAGE



One of the BEST stargazing spots in Mitchell County is at the shelter along our Cedar River Greenbelt Trail. After a short (less than 10 min/.4mi) candlelit walk down the trail, a large grassy area welcomes stargazers for an amazing view of the night sky during the height of the Perseid Meteor Shower. This meteor shower peaks annually around August 12th, with a large portion of the meteors, also called "shooting stars", seeming to originate in the Northeast sky near the constellation "Perseus".

Round up your friends and family, grab something comfortable to sit on (a blanket or camp chair works great), a water bottle, some snacks, bug spray, and a head lamp or flashlight - then just sit back and enjoy the celestial show! Comfortable walking shoes and a sweatshirt or light jacket are also recommended (depending on the weather).

While we wait for dark, stargazers will enjoy a casual program on night sky viewing, stars, and constellations. Binoculars, star charts, and constellation guides will be provided for use. Supplies to build your own micro-meteor collector, and other fun star activities will also be available.

This program will be cancelled if there is cloud cover or storms predicted for the area.

Please check our Facebook page, or contact Chelsea at (641) 330-0765 for questions, directions, or weather concerns.

This program is free and open to the public.



Additional summer youth programs from our friends at the Iowa DNR!



July 15th-17th Hickory Hills County Park, LaPorte City
August 4th-6th Wildwood Hills Ranch, St. Charles



Outdoor Journey for Girls is a three-day, two-night workshop aimed at introducing outdoor skills to girls ages 12–15 in a supportive, learning environment where they have opportunities to try things hands-on.

- Canoeing and Water Safety
- Basic Orienteering
- Archery
- Game Care
- Hunter Education Certification
- Fish and Wildlife Identification
- Firearm Safety and Basic Shooting
- Camping and Outdoor Survival
- Fishing and Preparing the Catch

Registration forms, chaperone, and sponsorship opportunities, are available at <https://www.iwinr.com/outdoor-journey-for-girls>



MAY 31ST
CAMANCHE, IA

IOWA YOUTH HUNTER EDUCATION CHALLENGE

Whether you are a youth aged 11-18, an adult with a desire to contribute time to your community, a member of an organization/business looking for a youth-oriented project, or if you have an interest in hunting and the outdoors, Iowa YHEC is an opportunity you don't want to miss!

Iowa YHEC-the Youth Hunter Education Challenge is an event that takes place each June. This year the event will be held May 31st at Rock Creek Marina and Campground, Camanche, Iowa. Youth from all over Iowa come to compete in 8 events, learn about the outdoors, and have fun with other youth and adults that have similar interests.

The events include four shooting events (archery, muzzleloading rifle, shotgun, and small-bore rifle) and four non-shooting events (wildlife identification, orienteering, hunter safety trail, and written exam). Most youth compete as part of a team of five from their area, but youth can register as individuals, as well. There are two age categories, Junior (ages 11-14) and Senior (ages 15-18).

For more information on this fun event, or to volunteer or donate, please visit: <https://www.iowadnr.gov/things-to-do/camps-workshops/youth-hunter-education-challenge>

RECENT RECYLING NEWS & THE LANDFILL LATEST

FMC Landfill - 3354 330th Street Elma, IA 50628
www.fmclandfill.org

Hours:

Monday: 7am-3pm
Tuesday: 7am-3pm
Wednesday: 7am-3pm
Thursday: 7am-3pm
Friday: 7am-3pm
Saturday: Closed
Sunday: Closed



SUMMER

SATURDAYS:

June 21st - 8:00AM-12:00
July 12th - 8:00AM-12:00
August 16th - 8:00AM-12:00



We got a new scale! The old one had rusted out badly. The new scale was formed and installed at the end of April. Thanks to all parties involved in helping construct this vital FMC Landfill tool.



Mobile HHM Collection

This service is offered free once a month during the summer for household hazardous materials, **BY APPOINTMENT ONLY** at the recycling center in Osage.

Make your appointment or get more information now by calling (641) 982-4288.

The Landfill has a HHW collection center on the property that is open by appointment for those who can't make these collections.

WAPSI-GREAT WESTERN LINE

Trail Events

TRAILHEAD

Wapsi-Great Western Line 110 EAST MAIN STREET (U.S. HWY #9)
 RICEVILLE IA 50466
WWW.WGWLTRAIL.COM



- **Saturdays & Sundays - Trailhead Welcome Center Open**, 2-4 PM through Labor Day
- **June 1st – Golf Cart Day & Pie Sunday** @ Trailhead 2-6PM.
 - **Golf cart passes available** only for this day (\$12 fee) at Welcome Center. Carts must be driven only by a holder of an official car license. Bring your own cart or rent one from Riceville Golf Course (641-985-2447). Begin and end your golf cart adventure at the Trailhead. No golf carts allowed in Lake Hendricks/campground area. Registration fee supports Trailhead maintenance.
- **July 6th – Pie Sunday** @ Trailhead 2-5PM
- **August 2nd – Wapsipinicon Festival Events**
 6:30AM - **Wapsi Wiggle Half Marathon** - Pre-register [online](#)
 7:30-10AM – **Community Pancake Breakfast**
 8:00AM – **Wapsi Wiggle: 5K Race** Pre-register [online](#).
 8:45 AM – **Kids Fun Run:** For kids 10 years old and younger. No registration required. Gather at the trailhead flagpoles.
 9AM-3PM – **Treasure Hunt**
- **August 3rd – Pie Sunday** @ Trailhead, 2-5PM
- **August 20th – Senior Citizens Golf Cart Day**



5K Fun Run | Training Half-Marathon
 WAPSI-GREAT WESTERN LINE TRAIL





Mitchell County Conservation Board

1879-3 Highway 9
Osage, IA 50461
Office: (641) 732-5204



Help us keep costs down and save resources by going paperless. If you would like to receive our newsletter electronically, please send an email to crowliff@mitchellcoia.us

www.mitchellcountyconservation.com/



Keep up to date with our events and nature happenings by liking and following us on: Facebook, Instagram, Twitter, YouTube and at <https://www.mitchellcountyconservation.com/> and at <https://www.mitchellcountyconservation.com/County/Mitchell.aspx>



Mitchell County Conservation Board:

Bridget Chatfield
Lori King
Mike Palsic
Dennis Riley
Mark Ross

Staff:

Mike Miner - Director

Daniele Dorsey - Office Manager

Brian Huffman - Parks Supervisor

Matt Nicholson - Maintenance

Brad Olson - Trails Manager

Chelsea Rowcliffe - Naturalist

Connor Siffka - Nat. Resources Tech.

Andy Taets - Natural Resource &

Outdoor Recreation Specialist

Austin Walk - Nat. Resources

Tech./Roadside Manager

Mitchell County Environmental Education Foundation:

Bridget Chatfield - President

Dave Goodale - Vice Pres.

Jessica Bohannon - Secretary

Daniele Dorsey - Treasurer

Jonathon Cramer

Eric Follmuth

Gary Huffman

Ed & Joanne Kleinwort

Mit & Linda Owen

Chelsea Rowcliffe (ex-officio)

Steve Strashheim

Andy Taets (ex-officio)

Diane Wright