



THE TRIBUTARY

Spring 2024

NEWSLETTER FOR MITCHELL COUNTY CONSERVATION BOARD AND ENVIRONMENTAL EDUCATION FOUNDATION

MITCHELL COUNTY



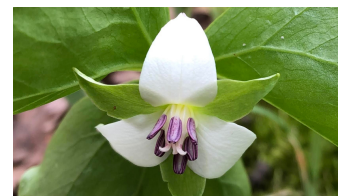
Spring green-up at Pinicon Alders Wildlife Area Cabin

SPRING INTO THE OUTDOORS!

Spring fever has hit here at Mitchell County Conservation and we are ready to get OUTSIDE! We have big plans for habitat work, including burning, planting, and tree maintenance this spring. We are also just as excited as you to go camping, hit the trails, and explore the great natural spaces we have here in Mitchell County. Check out the next pages and the calendar for upcoming MCCB programs, nature events, and local happenings.

A few things to keep in mind as you enjoy Mitchell County Conservation areas this Spring:

- Much of our spring work is weather dependent - we may be burning one day and planting trees or seeding down prairie or wildlife food plots another. We'll try to keep you posted on what fun things we're up to via our social media outlets.
- Spring Turkey season starts in April. Hunters need to keep good hunting safety and ethics in mind and respect other visitors, and wildlife area users need to be aware that hunters may be sharing the woods with you, so don't forget to wear something bright!
- Walking trails are sensitive to heavier traffic if the weather has been wet - help us keep our trails in good condition and do not ride bikes or horses on muddy trails.
- Spring is the time for ticks - be vigilant and practice good tick prevention tactics (long sleeves, socks over long pants, thorough checks after visiting the woods, etc.)



A few things to look for as you venture out this Spring:

- Partial Solar Eclipse on April 8th! Here in Mitchell County, we'll see about 80% total eclipse. Visit the Iowa Space Grant Consortium Website for some great tips on how to safely view the eclipse and fun facts & project ideas: <https://www.iaspacegrant.org/funding/education-outreach/solar-eclipse>
- Multitudes of spring migrating birds! Now is a great time to fill those feeders and don't forget the hummingbird nectar (1 part white granulated sugar:4 parts purified water) and jelly/oranges for the Orioles!
- ALL the spring babies! Please keep wild babies wild and do not disturb or remove them from their habitat! Often, wild moms will leave their babies in a safe place during the day and return later to tend to their young.
- Visit the spring woods in search of spring wildflowers and a maybe even a few morels!
- Make plans to show some love to Mother Earth for Earth Day and plant a tree on Arbor day.
- Don't forget to share your outdoor adventures with us! We love to hear about your favorite Mitchell County Conservation area, outdoor activity, or nature find.

In this issue:

Upcoming Programs.....	pgs 2, 3, & 4
MCEEF Scholarship	pg 2
Events Calendar.....	pg 5
Building Better Birders Report...pg	5
MCEEF.....	pg 6
WGWL Trail Events.....	pg 7
Recycling & Landfill News.....	pg 7

April Public Programs

Calling all wildlife watchers! Mitchell County Conservation is partnering with the Iowa DNR to host a frog and toad call survey training workshop in Mitchell County! These workshops are for anybody interested in getting involved in Iowa's Frog and Toad Call Survey which has been collecting data on our state's amphibians for over 30 years! MCCB Naturalist Chelsea Rowcliffe has been a part of the Frog & Toad Survey since 2011!

Interested volunteers should first visit and read through the survey requirements to see if it is something you'd have the time for and an interest in! You can then see whether there are any survey routes nearby that need a monitor by browsing the [maps of available routes](#). Surveyors are especially needed Mitchell and surrounding counties. If you don't see an available route near you, creating your own survey route is also an option! The time commitment for conducting the survey and submitting data is roughly 10 hours total between April and July each year and will require being out after dark for roughly 2 hours during each survey period. This training workshop is most appropriate for adults or older children (12+). There are limited seats available and a \$10.00 fee is required to cover materials. Registration will close a week prior to the workshop or whenever the workshop has been filled. Direct questions to Stephanie at vwmp@dnr.iowa.gov.

Interested volunteers must attend a training workshop. [Register to grab a spot in the workshop today!](#) To learn more about the survey visit the [DNR Volunteer Wildlife Monitoring Program webpage](#).

FROG & TOAD CALL SURVEY TRAINING

April 10
6:30-9:30 PM



Happy Earth Day

- April 22nd -

Planet vs. Plastics

For Earth Day 2024, EARTHDAY.ORG is unwavering in our commitment to end plastics for the sake of human and planetary health, demanding a 60% reduction in the production of ALL plastics by 2040.

<https://www.earthday.org>

MCEEF Scholarship!

The Mitchell County Environmental Education Foundation (MCEEF) is offering three (3) \$500 scholarship to High School Seniors currently living in, or attending school in Mitchell County and who plan to further their education in the degrees of environmental education, wildlife, fisheries, and environmental management, forestry, earth science/biology environmental studies, natural resources, outdoor recreation, or other outdoor/environmental related field. One scholarship will be awarded per school district.

- Must be a resident of or attend school in Mitchell County
- Must plan to attend an in-state university, college, or community college.

• **Applications must be received at the MCCB office by April 12, 2024.**

Applications available online at www.mitchellcountyconservation.com or from Chelsea Ewen Rowcliffe, Mitchell County Environmental Education Foundation Ex-Officio, at chelsea@osage.net or 1879-3 Highway 9, Osage, IA 50461



While most holidays celebrate something that has already happened and is worth remembering, Arbor Day represents a hope for the future. The simple act of planting a tree represents a belief that the tree will grow to provide us with clean air and water, cooling shade, habitat for wildlife, healthier communities, and endless natural beauty — all for a better tomorrow. The Arbor Day Foundation is a global nonprofit inspiring people to plant, nurture, and celebrate trees. In the face of a changing world, they're scaling efforts to plant 500 million trees by 2027 in areas where they're needed most. With a strong network of global partners, a science-based approach, and more than 50 years of planting trees all over the world, the ADF knows what it takes to make it happen. Help plant more trees, educate more people, get more hands in the dirt, and support more lives across the globe.

Spring B.O.W. - Partnership with Iowa DNR



JOIN US!
 Solon, IA
 April 19-21, 2024
 Camp Io-Dis-E-Ca



Becoming an Outdoors-Woman (BOW) is an international program aimed primarily at women, but is an opportunity for anyone 18 years or older to learn outdoor skills usually associated with hunting and fishing, but useful for many outdoor pursuits. The workshop is for you if...

- you have never tried these activities, but have hoped for an opportunity to learn.
- you are a beginner who hopes to improve your skills.
- you know how to do some of these activities, but would like to try your hand at some new ones.
- you are looking for the camaraderie of like-minded individuals.

The workshop is being held at Camp Io-Dis-E-Ca in Solon, IA. Workshop fees include instruction in all sessions, program materials, use of demonstration equipment, t-shirt, session takeaways, meals and lodging.

Mitchell County Naturalist Chelsea will be teaching sessions on "DIY Charcuterie Boards: From Tree to Table" & "Wild Meat Processing". Other sessions highlights include: Introduction to Firearms, Archery & Atlatls, Fishing, Kayaking, Backpacking, Wild Edibles, and more! Check out the BOW Brochure for more information! www.iowadnr.gov/bow

April 22
7:30 PM

Full Moon
 & *Wildflower Walk*

@ Hamlin Garland Wildlife Area - St. Ansgar

Let's celebrate EARTH DAY with a leisurely walk through the woods to admire spring wildflowers!

Our walk will begin at 7:30 at the Hamlin Garland Wildlife Area, just north of St. Ansgar on Hwy 218. MCCB Naturalist Chelsea Ewen Rowcliffe will guide you through the evening woods, looking for ephemeral wildflowers, waking spring trees, and returning migrating wildlife. We'll welcome the Full Pink Moon as we finish our walk. Chelsea will provide ID guides and full moon activities. Please wear weather appropriate clothing and shoes/boots. A water bottle is also recommended. This class is program is free and appropriate for all ages.

This program will be cancelled if there is rain or storms.

Please watch our Facebook page and/or call Chelsea at (641) 330-0765 for weather related updates.

May Public Programs



SPRING WILD EDIBLES

MAY 18TH

9-1PM

MILTON R. OWEN NATURE CENTER
OSAGE, IA



Join Naturalist Chelsea Ewen Rowcliffe to discover the flavors of the forest! There is an entire grocery store of delicious, local, wild foods just waiting outside your backdoor! This HANDS ON class focuses on how to identify key features of seasonal wild edible plants, knowing when and what to ethically and sustainably harvest, and how to prepare wild foods. Flowers, greens, roots, and shoots are just a few of the things that will be on the menu! Come ready to help dig, cut, cook, and most importantly EAT!

The class will begin with a lesson identification, rules, and tools, and then transition to a leisurely collection hike. In the field, we will identify local edible plants, collect appropriate parts, and return to the nature center. Then it's time to prepare, cook and sample the flavors of spring! Please wear weather appropriate clothing and footwear. Bring a water bottle, notebook and/or camera for taking notes, a writing utensil, and your curiosity! Chelsea will have recipes, notes, and ID sheets to share.

Please CALL TO REGISTER

\$10 for MCEEF Members/\$20 for non-members

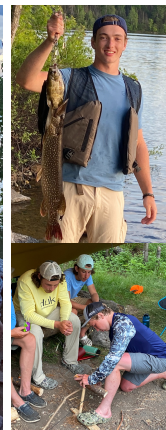
(641) 330-0765 or (641) 732-5204



If you enjoy participating in the programs Mitchell County Conservation/Environmental Education Foundation offers, appreciate the use of outdoor equipment and trails, or just want to ensure the youth, families, residents, and visitors to Mitchell County get to spend time in and understand the importance of conserving our natural resources - **please consider joining the Mitchell County Environmental Education Foundation!**

Your membership, donation of time & talents, and/or monetary support can make an even larger impact when used for grant matches and opportunities like those listed here.

See how to become a member on page 6.



“The Mitchell County Environmental Education Foundation creates public awareness, promotes responsible stewardship, and expands support for the conservation of our natural resources and cultural heritage.”

Spring 2024 Calendar of Events

APRIL

S	M	T	W	T	F	S
	1	2	3	4	5	6
7	8	9	10	11	12	13
14	15	16	17	18	19	20
21	22	23	24	25	26	27
28	29	30				

1st-May 1st - Iowa DNR Light Geese Conservation Order (additional regulations apply)

All month - Wapsi-Great Western Line Trail work days

5th-7th - Youth Resident Spring Turkey Season

8th - Solar Eclipse!

8th-May 12th - Resident Archery Only Spring Turkey Season

8th-11th - Spring Turkey Season 1

10th - Frog & Toad Call Survey Training - 6:30 @ Milton R. Owen Nature Center

12th-16th - Spring Turkey Season 2

17th-23rd - Spring Turkey Season 3

19th-21st - Spring Becoming an Outdoors Woman Workshop

22nd - Happy Earth Day!

22nd - Full Moon & Flower Walk - 7:30 PM @ Hamlin Garland Wildlife Area

23rd - Full "Pink" Moon

24th-May 12th - Spring Turkey Season 4

26th - Arbor Day



Trout Lily

S	M	T	W	T	F	S
			1	2	3	4
5	6	7	8	9	10	11
12	13	14	15	16	17	18
19	20	21	22	23	24	25
26	27	28	29	30	31	

May 1st - End of Iowa DNR Light Geese Conservation Order

April 24th - May 12th - Spring Turkey Season 4

4th - Iron Horse Marathon @ Wapsi-Great Western Line Trail

4th - Iowa Hunter Education Instructor's Association Banquet @ Milton R. Owen Nature Center

12th - Happy Mother's Day!

12th - End of Spring Turkey Season 4

15th - Environmental Education Foundation Meeting - 7:00PM

18th - Wild Edibles Class @ Milton R. Owen Nature Center 9-1PM

23rd - Full "Flower" Moon

27th - Happy Memorial Day!

Memorial Day-Labor Day - Trailhead Welcome Center Open - Saturday & Sunday 2 - 4PM



Eyelash Cup Fungus

Building Better Birders Workshops

Where Passion for Birds Meets Education - Building a Community of Lifelong Learners and Citizen Scientists!

This past year, Mitchell County Conservation hosted a 3-Part educational series, "Building Better Birders". This award-winning programming is designed to improve bird identification skills of local citizens and create birders that can contribute to knowledge about birds across the state, and promote a greater interest & involvement in citizen scientist projects such as Christmas Bird Counts, the Great Backyard Bird Count, Project FeederWatch, or even Monarch Butterfly Tagging! The workshops were conducted by Kelly McKay (BioEco Research and Monitoring Center) in conjunction with Mitchell County Conservation. Kelly McKay is a recognized leader in the birding field throughout the Midwest and his 40 years of experience in the field as an avian researcher and educator made these workshops special! Workshops were presented free of charge and supported by the Resource Enhancement and Protection - Conservation Education Program (REAP-CEP).

The Mitchell County programming series featured three events focusing on Common Feeder Birds, with a birdfeeder build project, Floodplain Forest Birds with a bird hike and birdhouse build, Wetland Birds with a bird hike at the New Haven Potholes, and Nocturnal Raptors with an evening Owl Prowl. Each session included identification skills, calls, and bird behavior to help better identify the feathered friends in our common Mitchell County habitats. Across all three workshops, a total of 75 species were recorded, with a few highlights of a Broad-winged Hawk, Pied-billed Grebe, Pileated Woodpecker, Barred Owls, and beautiful spring migrants like Indigo Buntings, Baltimore Orioles, Prothonotary Warblers, and Scarlet Tanagers.

If you'd like a full list of the species recorded at these workshops, or more information on bird-friendly practices or citizen science

SPRING 2024 projects (like our upcoming Frog & Toad Call Survey training), give us a call at (641) 732-5204. Thanks to all that participated! **PAGE | 05**



MITCHELL COUNTY



With our ever increasing “plugged-in” world, exposure to and understanding of our natural world is more important than ever. The Mitchell County Environmental Education Foundation strives to support quality environmental education programs for ALL residents and visitors of Mitchell County. Our goals include providing financial support through memberships for programs that educate and train the public, as well as increase access to such programs through interactive displays, events, and volunteers. Program topics include ecology, local plants and animals, geology, outdoor recreation skills, recycling, human & land relationships, and many more. Consider supporting environmental education by becoming a member today!

“The Mitchell County Environmental Education Foundation creates public awareness, promotes responsible stewardship, and expands support for the conservation of our natural resources and cultural heritage.”



Recent projects funded through the MCEEF:
 Educational Supplies
 Digital Display Hub
 3-D Archery Targets

INTERPRETIVE PLAN FOR THE NATURE CENTER!
YOUR DONATION can make it a reality!!!

Benefits of being a member...

- Early sign-up for camps, trips, and limited classes
- Recognition on our donor wall
- Tax-deductible donation
- Input on Projects, Events, & Programs
- Volunteer opportunities
- Reduced registration prices for classes, or “members only” programs



BECOME A MEMBER

Yes! I want to join MCEEF!

Additional Family Names/Memorial Inquiries:

Name/Organization

Address

City State Zip Code

Phone

Email

Membership Levels

- Student \$10
 - Individual \$25
 - Family (2+ people) \$40
 - Senior (60+) \$20
 - Memorial **Ask about options**
 - VOLUNTEER!**
- Fundraising
 - Nature Center Host
 - Event/Program Volunteer
 - Other Talent?

Donor Levels

- Sugar Creek \$50
- Spring Creek \$51 - \$100
- Turtle Creek \$101-\$250
- Little Wapsi \$251-\$500
- Burr Oak \$501-\$1000
- Little Cedar \$1000 +
- Red Cedar \$5000+

Make checks payable to:
 MCEEF
 1879-3 Highway 9
 Osage, IA 50461

This is a TAX EXEMPT Donation!



RECENT RECYLING NEWS & THE LANDFILL LATEST

FMC Landfill - 3354 330th Street Elma, IA 50628

www.fmclandfill.org

HOURS

MONDAY: 7AM-3PM

TUESDAY: 7AM-3PM

WEDNESDAY: 7AM-3PM

THURSDAY: 7AM-3PM

FRIDAY: 7AM-3PM

SATURDAYS: APRIL 20 & MAY 18

FROM 8-NOON

SUNDAY: CLOSED

HOUSEHOLD HAZARDOUS MATERIALS (HHM) MOBILE COLLECTION

What are Household Hazardous Materials? They are used in cleaning, home improvement projects, automobile maintenance, lawn and garden care, and a variety of other tasks. HHMs are products which pose a health threat when disposed of improperly. HHMs usually have one or more of the following characteristics:

Corrosive or Caustic: They eat or wear away at most materials.

Flammable: They easily ignite.

Reactive: They can react with other chemicals and produce deadly vapors.

Toxic: They are poisonous to humans and animals.

Signal words printed on the label like CAUTION, DANGER, WARNING, or KEEP OUT OF REACH OF CHILDREN indicate that a material is probably a HHM.

The Floyd, Mitchell, & Chickasaw County Landfill will safely dispose of your HHMs for **FREE** once a month April-October at the mobile site, located at the Mitchell County Recycling Center.

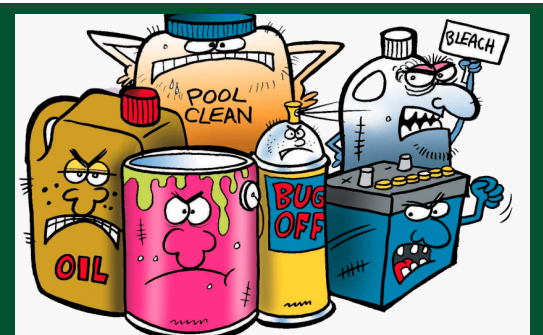
April 17th

May 15th

You must call 641-982-4288 between 7:00-2:00, Monday - Friday to set up an appointment for the above dates for Household Hazardous Waste. If you do not have an appointment your items will not be collected.

Can't make the monthly day? You may bring your HHMs to the landfill's new Regional Collection Center year-round! An **appointment is needed** to bring this to the landfill. 24 hours in advance is advised, as same day appointments are not guaranteed. Businesses and farms are also eligible for this service, but may be subject to forms and pre-approval. Give us a call to find out if you qualify!

Check our website www.fmclandfill.org for more information or to make an appointment to bring items to the landfill. The online appointment system is NOT for the mobile collections. Call for an appointment for the mobile collections.



- Oil Based Varnish
- Pool Chemicals
- Rug Cleaner
- Pesticides
- Motor Oil
- Weed Killers
- Furniture Polish
- Paint Thinner
- Antifreeze
- Fertilizers
- Spot Remover
- Furniture Stripper
- Wood Preservatives
- Cement
- Rat Poison
- Household Batteries
- Aerosol Cans
- Oven Cleaner
- Kerosene
- Vehicle Batteries
- Drain Opener
- Toilet Bowl Cleaner
- Photo. Supplies
- Fluorescent Bulbs
- Ballasts
- Air Fresheners
- Fuels
- Sharps

WAPSI-GREAT WESTERN LINE

Trail Events

TRAILHEAD

Wapsi-Great Western Line

110 EAST MAIN STREET (U.S. HWY #9)

RICEVILLE IA 50466

WWW.WGWLTRAIL.COM

APRIL - Spring Cleanup on the Trail!

Call (641) 220-2685 to sign up

Trailhead Welcome Center Open

Saturday & Sunday from 2:00-4:00

Memorial Day – Labor Day

May 4th - Iron Horse Race! Marathon (Boston Marathon qualifier), Half-marathon, and 5K. Register online at <https://runsignup.com/Race/IA/Riceville/TheIronHorse>

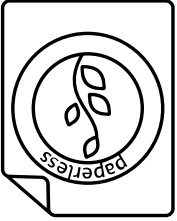


Mitchell County Conservation Board

1879-3 Highway 9

Osage, IA 50461

Office: (641) 732-5204



Help us keep costs down and save resources by going paperless. If you would like to receive our newsletter electronically, please send an email to chelsea@osage.net.



www.mitchellcountyconservation.com
<https://www.mycountyparks.com/County/Mitchell.aspx>

Keep up to date with our events and nature happenings by liking and following us on: Facebook, Instagram, Twitter, YouTube and at



Mitchell County Conservation Board:

- Bridget Chatfield
- Lori King
- Mike Palsic
- Dennis Riley
- Mark Ross

Staff:

Mike Miner - Director

Danielle Dorsey - Office Manager

Brian Huffman - Parks Supervisor

Matt Nicholson - Maintenance

Brad Olson - Trails Manager

Chelsea Rowcliffe - Naturalist

Connor Siffka - Nat. Resources Tech.

Andy Taets - Natural Resource &

Outdoor Recreation Specialist

Austin Walk - Nat. Resources

Tech./Roadside Manager

Mitchell County Environmental Education Foundation:

Vacant - President

Dave Goodale—Vice Pres.

Jessica Bohannon—Secretary

Danielle Dorsey—Treasurer

Bridget Chatfield

Jonathon Cramer

Gary Huffman

Ed & Joanne Kleinwort

Milt & Linda Owen

Chelsea Rowcliffe (ex-officio)

Andy & Sam Taets

Diane Wright