
Pioneer Park Bank Restoration for Fish Habitat Establishment

Prepared for: Fish Habitat Grant

Prepared by: Andy Taets, Mitchell County Conversation Board

Date: November 30, 2017



Office
copy

- The proposed grant project programs or policies are **not expected to have** a disproportionate or unique impact on minority persons.

Present the rationale for determining no impact.

I hereby certify that the information on this form is complete and accurate, to the best of my knowledge: Name: _____

Title: _____

Definitions

“Minority Persons”, as defined in Iowa Code Section 8.11, mean individuals who are women, persons with a disability, Blacks, Latinos, Asians or Pacific Islanders, American Indians, and Alaskan Native Americans.

“Disability”, as defined in Iowa Code Section 15.102, subsection 5, paragraph “b”, subparagraph (1):

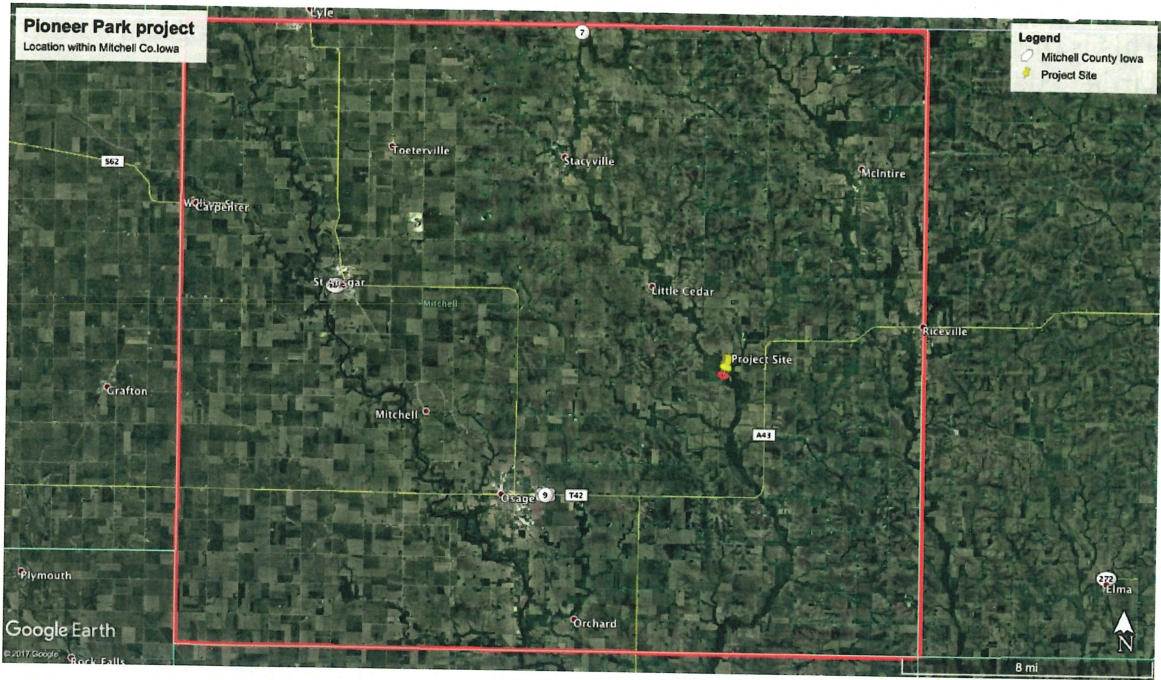
b. As used in this subsection:

(1) *"Disability"* means, with respect to an individual, a physical or mental impairment that substantially limits one or more of the major life activities of the individual, a record of physical or mental impairment that substantially limits one or more of the major life activities of the individual, or being regarded as an individual with a physical or mental impairment that substantially limits one or more of the major life activities of the individual.

"Disability" does not include any of the following:

- (a) Homosexuality or bisexuality.
- (b) Transvestism, transsexualism, pedophilia, exhibitionism, voyeurism, gender identity disorders not resulting from physical impairments or other sexual behavior disorders.
- (c) Compulsive gambling, kleptomania, or pyromania.
- (d) Psychoactive substance abuse disorders resulting from current illegal use of drugs.

“State Agency”, as defined in Iowa Code Section 8.11, means a department, board, bureau, commission, or other agency or authority of the State of Iowa.



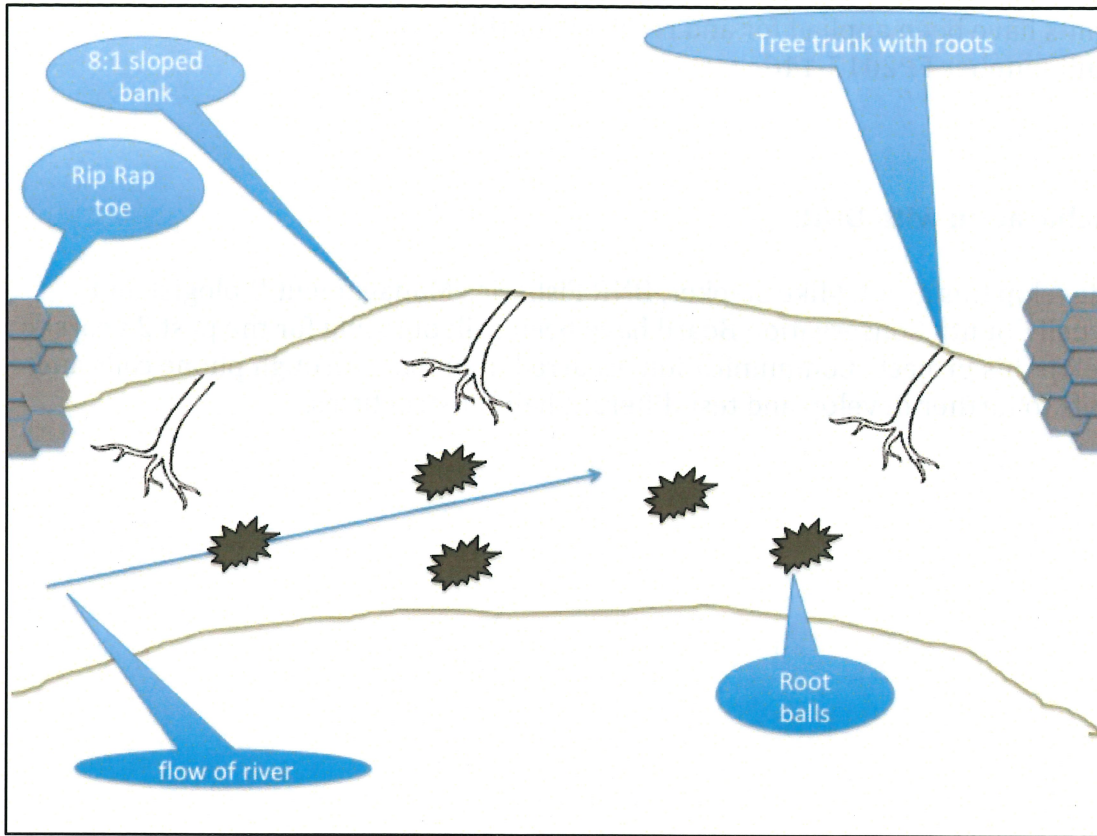
Benefits:

Erosion will be significantly reduced from the riverbank being sloped to a ratio of 8:1, the rip rap toes placed on the outer edges of the riverbank project area, and the trees with roots diverting flow from the banks. On the slope, native plants will be seeded, which will in turn increase the water quality due to the deep root systems and improved erosion control. Fish structure and habitat value will be increased as a result of the placement of root wads in the river throughout the project area. Stream depth will be increased from the trees with roots and from the root wads, which produce scour holes. The sport fishing opportunity will be amplified with the slope ratio being sloped 8:1, and increased fish structure and habitat created from the root wads will enhance the quality of the fishing.

Approach:

- 1) The riverbank will be sloped to 8:1, with the excess dirt being hauled off site.
- 2) Two 4'x4'x9' toe rock structures will be placed on each edge of the project site.
- 3) 3 logs with roots will be placed into the bank and extending into river, one on each edge and one in the middle.
- 4) 4-6 root wads will then be placed throughout the river bed by the use of an excavator, so the roots are just below the surface of the water.
- 5) Seed the slope with native species.
- 6) Create access within Pioneer Park to the newly developed project area.

Complete Overhead View of Project Site



Cost:

- Rip Rap for toe rock - 25 ton @ \$25/ton.....\$625.00
- Hauled Rip Rap - \$200 per 25 ton.....\$200.00
- Placement of root wads.....\$500.00
- Sloping river bank 778ft.....\$35,100.00
- Placement of J-Hook tree.....\$250.00
- Wet Prairie Seed 2 Acre.....\$480.00
- Dry Prairie Seed 5 acre.....\$1,050.00

Total Project cost
\$38,205.00

Root Wads



Project Site Looking west



Root Wad

