

# Turtle Creek Facts

Stocked with 9,300 catchable size trout annually (April-October)

- 7,950 Rainbow trout
- 1,350 Brook trout
- 300 Stocked weekly (81% Rainbow/19% Brook)

Naturally reproducing Brown trout populations on 2.7 miles of stream. According to the Iowa DNR 2011 Trout Angler Survey, Turtle Creek ranked as the 17<sup>th</sup> out of 96 most popular trout streams to fish with 11,091 angler trips per year.

- In 2001, Turtle Creek ranked 38<sup>th</sup>
- An angler will come back to this section of stream on average 9.2 times in a year.

According to an Iowa DNR publication from 2007, anglers spend about \$27.00 per trip. If we look at the Economic Impact study conducted by Trout Unlimited in 2008, the average angler will spend \$209.50 per trip to fish the stream.

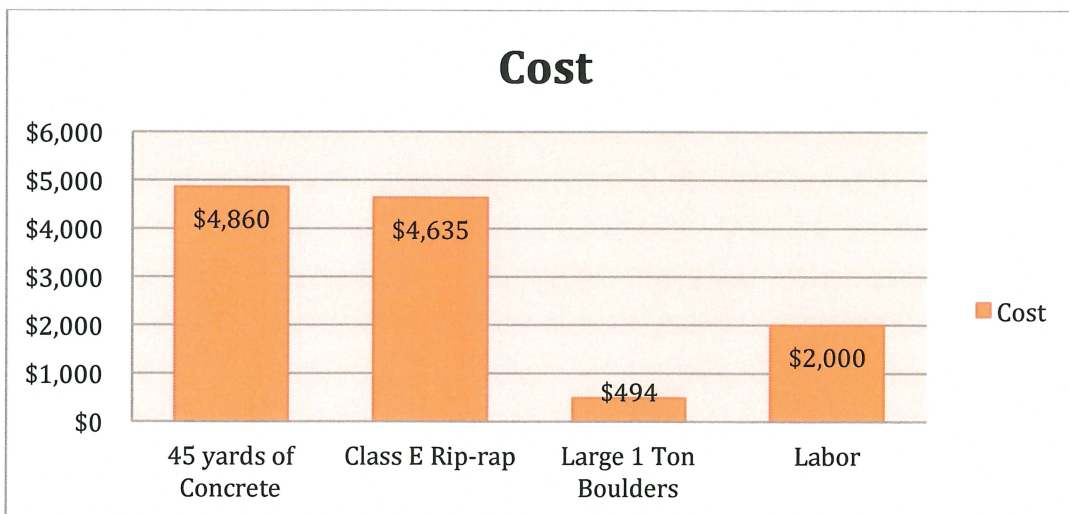
We feel that the amount Iowa anglers spend is probably somewhere in between these figures. So if we multiply 11,091 angler trips per year by \$27.00 or by \$209.00, the amount of money this area would benefit from would range from \$299,457 to \$2,323,564.50. This could be even higher since according to our 2011 Trout Angler Survey, people come back to this stream on average 9 times per year! This Stream is the most re-visited trout stream on our survey.

From 2003 to 2008, approximately 2,000 fingerling Brown Trout-French Creek strain were stocked each May. In our 2008 sampling runs, fingerling Brown trout were sampled. Natural reproduction was suspected so in 2009, no fingerling Brown trout were stocked. Sampling in 2009 showed definite Brown trout reproduction. Sampling in 2011, confirmed its status as a naturally reproducing stream.

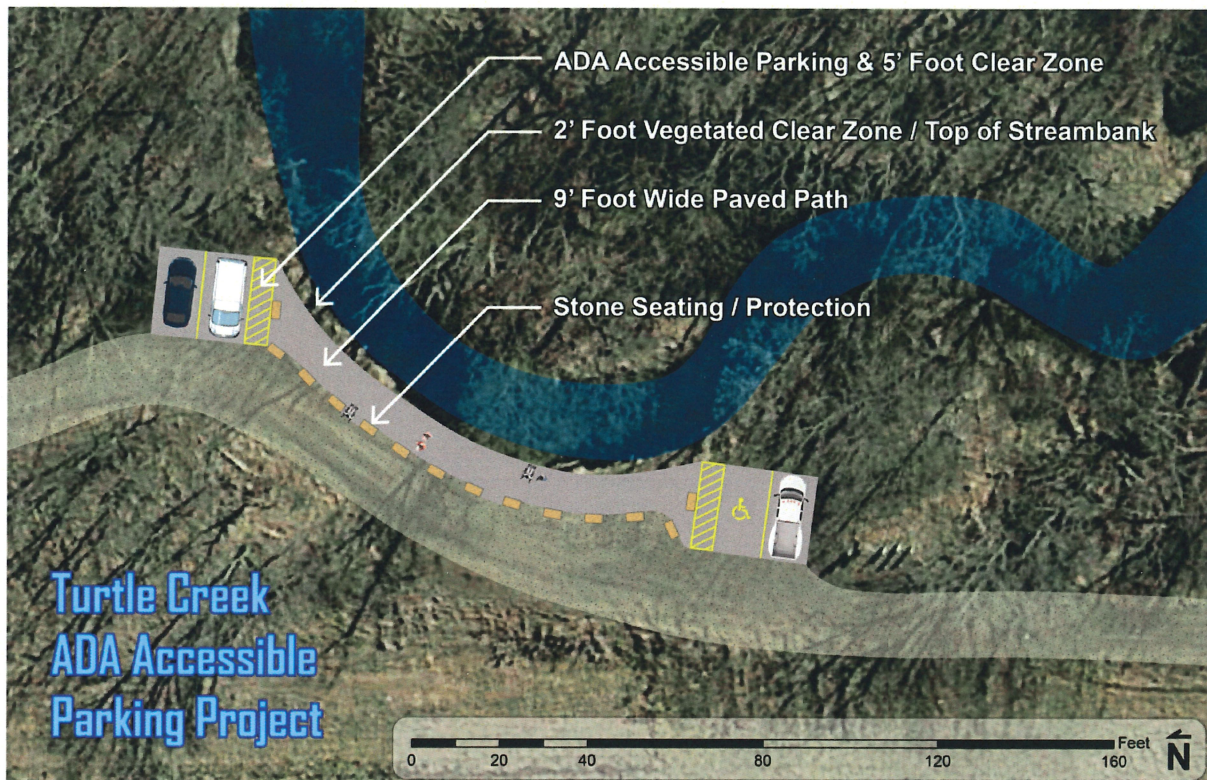
Preliminary data from 2014 showed young of year Brook trout at one of our sampling locations. This is exciting and unusual as this stream is typically too warm to support high numbers of Brook trout, Brook trout like water temperatures cooler than 65 degrees.

## Budget

Line Item	Cost
45 yards of Concrete	\$4,860.00
Class E Rip-Rap/225 ton	\$4,635.00 (Donated)
Large 1 ton boulders (20)	\$494.40 (Donated)
Labor Cost	\$2000.00
<b>Total Cost</b>	<b>\$11,989.40</b>



1. Parking Lots concrete  
(20x27 6inch thick rebar)
2. Side Walk concrete  
(9 ft wide,225 ft long, 4inch thick no rebar)
3. Grading and sloping of site



Stone seating/protection will be placed by Mitchell County Conservation Board  
If you have any question or want to walk the site, please call Andy Taets 641-420-5517  
Bids due 2 weeks after notification.